

Central Brass Company, Inc.
 3325 S. Garfield Ave.
 Commerce, CA 90040
 (800) 321-8630
 www.centralbrass.com

Tools:



Adjustable Wrench



Plumbers Putty



Teflon Tape



Rags

Model Number: 0284-A-Q, 0285 Series, 0287 Series, 0289-A

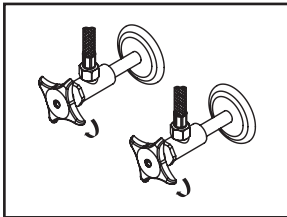


Warnings and Notes:

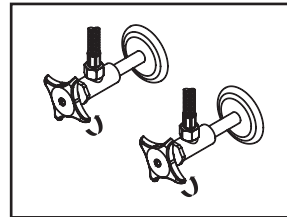
Check with local plumbing code requirements before installation. This product should be installed by a local listed plumber. **Do not use plumbers putty on threads.**

Installation Steps:

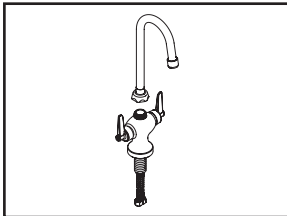
Two Handle Bar Faucet



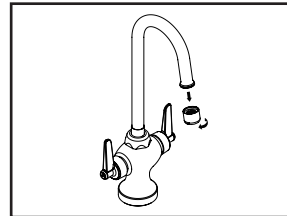
(1) Shut off water supplies. Remove old faucet. Clean mounting surface in preparation for new faucet.



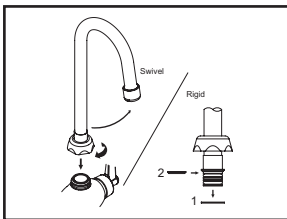
(5) When using stainless steel braided faucet supply hose; this faucet requires one end of the supply hose to have 1/2" female IPS connection. The other end of this supply hose must match the thread on the water supply valve under the sink. Once you've identified the required size, carefully follow the manufacturer's installation instruction to install hose.



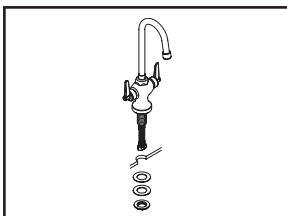
(2) For spout with spout nut, make sure the spout is installed straight to the faucet body to avoid damaging spout O-ring. For spout with threaded end, apply Teflon tape on spout threaded end and install spout to faucet body, adjust spout to face straightforward.



(6) Important: After installation is complete, remove aerator. Turn water supplies on and turn on both handles to allow hot and cold water to run at least one minute each. While water is running, check for leaks. Turn off handles and replace aerator.



(3) For spout model number CS-22002, CS-22003, utilize friction brass washer to make spout rigid by removing Nylon gasket and replacing with friction brass washer, tighten retainer nut to the faucet body with wrench.



(4) Apply plumbers putty on the bottom of faucet, place faucet shank through the mounting hole. Slide the crowfoot washer through shank from underneath the sink. Tighten the locknut with the help of 1-3/32" size socket.