

For Residential and Commercial Applications

Job Name		Engineer / Architect	
Job Location		Wholesaler	
Submittal Date		Contractor	

SSR44MX Integral Shut-Off Straight Stop w/ Lock Shield & Screwdriver Slot – Female Sweat x Male Sweat

Use: For use in potable water distribution systems, hot and cold, in accessible locations only. Not intended for recirculating water systems that produce continuous use temperatures above 115° F. For those applications use our KT™ series ball stop.

Design Features:

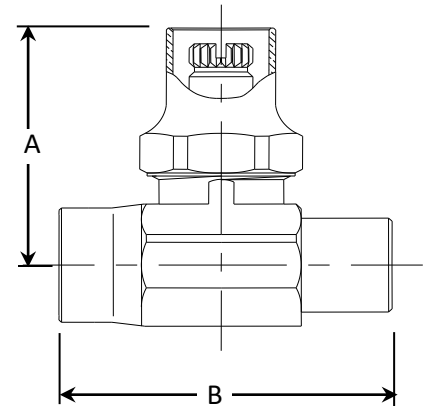
- **Machined one-piece brass body** provides strength, durability, and long-lasting performance
- **Screwdriver slot handle** helps protect against accidental stop operation during rough-ins and in general use



Operating Specifications:

Temperature: 40° - 140° F

Pressure: 125 PSI maximum



STOP MATERIAL SPECIFICATIONS

Body	Brass, plated
Screwdriver Slot Stem	Brass, plated
Bib & Packing Washers	Rubber
Packing Nut	Brass, plated

PART DIMENSIONS (Inches)

Model	DIM. A	DIM. B
SSR44MX	1.53	1.95

Part Listing:

- ☐ SSR44MX C 1/2" nom female sweat x 1/2" nom male sweat w/ lock shield & screwdriver slot, chrome
- ☐ SSR44MX R 1/2" nom female sweat x 1/2" nom male sweat w/ lock shield & screwdriver slot, rough brass

Listings & Certifications:

- IAPMO listed to ASME A112.18.1 /CSA



B125.1
(includes NSF/ANSI372& NSF61)

This specification and all information contained herein is the confidential and exclusive property of Brasscraft Manufacturing Company and shall not be disclosed to others without the written consent of Brasscraft Mfg. Co. This specification must be returned to Brasscraft Mfg. Co. if requested.

400.130 SSR84X Integral Shut-Off w/Loose Key-Sweat x MIP REV 9.19

BrassCraft®

©2019 Brasscraft Manufacturing Company